

the **dynamics** of water



**compact
booster systems**

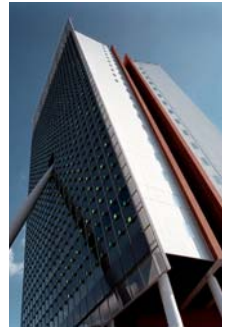
hydro-unit dp

compa



ve series

ct and safe



DP-Pumps, Dutch market leader in the field of booster systems for the supply of drinking water in domestic buildings and industry, introduces the Hydro-Unit DPVE product line. The product line consists of the standard Hydro-Unit, the Hydro-Unit HR and the frequency driven Hydro-Unit FR. Thanks to the smart construction the Hydro-Unit HR realizes energy savings up to 60%.

Experience in stainless steel as a basis

Because people's health depends on safe drinking water, it is of importance to construct the booster sets out of materials that do not affect the quality of drinking water. DP-Pumps has therefore selected stainless steel as a basis for booster sets. Headers and fittings are of stainless steel, and obviously, the compact stainless steel DPVE-pump, with built-in non-return valve, is applied. As a result, the unit is not only very safe, but also very durable and already complies with future European directives for drinking water.

Compact design

The system is very light and compact and because of that easy to transport, store and install. The bypass, that comes as a standard, is fully integrated within the system. The DPVE-pump is equipped with a built-in non-return valve and extended motor shaft, resulting in smaller dimensions and a reduced weight.

Innumerable possibilities

Logically, the booster systems come in a wide variety of capacities and pressures. When minimal noise levels are required, select the Hydro-Unit DPVE 14: it is fitted with low noise four pole motors.

Technical data

Maximum head: 70 m

Maximum capacity: 36 m³/h



hydro-unit hr

extremely





energy efficient

The reduction of energy consumption is a matter of great importance. Therefore, DP-Pumps introduces the new Hydro-Unit HR. Applying this booster set makes it possible to lessen energy consumption with up to 60%. The system's construction, with a large membrane tank, forms the basis of the high energy savings.

Often, a minimal run time for pumps is obliged. This protects the motor from running hot. Usually, this results in running pumps when there is no water demand, which is a waste of energy. The Hydro-Unit HR stocks the water in a large membrane tank. Thanks to this construction, the system only runs for one third of the time, compared to standard systems.

Applications

- Domestic buildings
- Offices
- Hotels
- Hospitals

Advantages

- Most energy efficient booster system on the market
- Straightforward control
- Easy maintenance

Options

- Equipped with break tank for separation of drinking and process water



hydro-unit fr

efficie





ent and silent

Frequency controlled booster sets are energy efficient. Pumps are ramped up and down in proportion to the demand of water, resulting in energy savings of up to 25%. Besides, as pumps do not run at full speed continuously, less noise is produced.

DP-Pumps' Hydro-Unit FR is fitted with the Mega-control control unit, making the booster set easy to install, adjust and monitor.

The pumps in the system are being switched on and ramped up and down pump by pump according to water demand instead of being ramped up and down simultaneously. The advantage is a lower energy consumption, as pumps are being switched off sooner. The average energy savings of the Hydro-Unit FR are 30%.

Applications

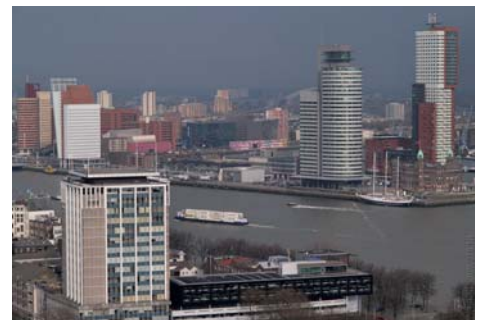
- Domestic buildings
- Offices
- Hotels
- Hospitals
- Industry

Advantages

- Straightforward control by Megacontrol
- Energy savings
- Easy maintenance
- Compact construction

Options

- Larger capacities and higher pressures
- Equipped with break tank for separation of drinking and process water





dp pumps

dp pumps
P.O. Box 28
2400 AA Alphen aan den Rijn
Holland

t +31 172 48 83 25

f +31 172 46 89 30

dp@dp-pumps.com
www.dp-pumps.com

